

# Bridge Over Troubled Water

Transcribed for Choir On The Green  
in style of Fairfield County Choir

## Intro

$\text{♩} = 89$

Sop  
I'll be your bridge\_\_\_\_ on trou\_bled w - a-ter When you're down\_\_\_\_ I will ca -

Mids  
I'll be your bridge\_\_\_\_ on trou\_bled w - a-ter When you're down\_\_\_\_ I will ca -

Men  
I'll be your bridge\_\_\_\_ on trou\_bled w - a-ter When you're down\_\_\_\_ I will ca -

5  
S  
- rry you like a bridge\_\_\_\_ on trou\_bled w - a-ter I will lay\_\_\_\_ me down

M  
- rry you like a bridge\_\_\_\_ on trou\_bled w - a-ter I will lay\_\_\_\_ me down

B  
- rry you like a bridge\_\_\_\_ on trou\_bled w - a-ter I will lay\_\_\_\_ me down

## Verse 1

12  
S  
When you're\_\_\_\_ wea - ry\_\_\_\_ fee\_lin' - small 1. When tears are in your eyes -

M  
When you're\_\_\_\_ wea - ry\_\_\_\_ fee\_lin' - small When tears are in your eyes -

B

18

S  
M  
B

— I will dry them all I'm on your side— oh— when times get rough—

24

**Chorus 1**

S  
M  
B

and friends can't be found— like a bridge o - ver trou-bled\_ wa-ter—

and friends just can't be found— like a bridge o - ver trou-bled\_ wa-ter—

and friends just can't be found— like a bridge o - ver trou-bled\_ wa-ter—

29

S  
M  
B

I will lay me down— like a bridge o - ver trou-bled\_ wa-ter— I will lay me

I will lay me down— like a bridge o - ver trou-bled\_ wa-ter— I will lay me

I will lay me down— like a bridge o - ver trou-bled\_ wa-ter— I will lay me

# Verse 2

34

S down When you're down and out On the street

M down Ooo ooo Ooo ooo

B down Ooo ooo Ooo ooo

41

S When ev - ening falls so hard I will com - fort you

M Ooo ooo so hard Com - fort

B Ooo ooo so hard Com - fort

45

S I'll take your part oh when dark - ness comes

M you When dark - ness comes

B you When dark - ness comes

**Chorus 2**

49

S and pain\_ is\_ all a - round like\_ a\_ bridge o - ver trou-ble\_ wa-ter\_

M \_\_\_\_\_ Aaah\_\_\_\_\_ like a bridge o - ver trou-ble\_ wa-ter\_

B \_\_\_\_\_ Aaah\_\_\_\_\_ like a bridge o - ver trou-ble\_ wa-ter\_

54

S I will lay me down\_ like a\_ bridge o - ver trou-ble\_ wa-ter\_ I will lay me

M I will lay me down\_ like a bridge o - ver trou-ble\_ wa-ter\_ I will lay me

B I will lay me down\_ like a bridge o - ver trou-ble\_ wa-ter\_ I will lay me

**Intro 2**

59

S down I'll be your bridge\_ on trou - ble\_ w - a - ter When you're down\_

M down I'll be your bridge\_ on trou - ble\_ w - a - ter When you're down\_

B down I'll be your bridge\_ on trou - ble\_ w - a - ter When you're down\_

63

S  
M  
B

I will ca - rry you like a bridge on trou-bled w - a-ter I will lay me

**Verse 3**

68

S  
M  
B

down Sail on - sil - ver girl\_ Sail on by Your time has

down Sail on - sil - ver girl\_ Sail on by Your time has

down Your time has

76

S  
M  
B

come to shine all your dreams all your dreams are on their way See how they shine

come to shine all your dreams all your dreams are on their way See how they shine

come to shine all your dreams all your dreams are on their way See how they shine

# Chorus 3

80

S oh if you ev - er need a friend I'm sail - ing right be - hind like a

M

B Aah like a

86

S bridge o - ver trou - bled wa - ter I will ease your mind like a bridge o - ver

M bridge o - ver trou - bled wa - ter I will ease your mind like a bridge o - ver

B bridge o - ver trou - bled wa - ter I will ease your mind like a bridge o - ver

91

S trou - bled wa - ter I will ease your mind

M trou - bled wa - ter I will ease your mind

B trou - bled wa - ter I will ease your mind

94 **Outro** Claps in

S I'll be your bridge\_\_\_\_ on trou\_bled w - a\_ter When you're down I will ca -

M I'll be your bridge\_\_\_\_ on trou\_bled w - a\_ter When you're down I will ca -

B I'll be your bridge\_\_\_\_ on trou\_bled w - a\_ter When you're down I will ca -

98

S - rry you like a bridge\_\_\_\_ on trou\_bled w - a\_ter I will lay\_\_\_\_ I will lay\_\_\_\_ me

M - rry you like a bridge\_\_\_\_ on trou\_bled w - a\_ter I will lay\_\_\_\_ I will lay\_\_\_\_ me

B - rry you like a bridge\_\_\_\_ on trou\_bled w - a\_ter I will lay\_\_\_\_ I will lay\_\_\_\_ me

103 Rit.

S down\_\_\_\_ lay me down\_\_\_\_

M down\_\_\_\_ lay me down\_\_\_\_

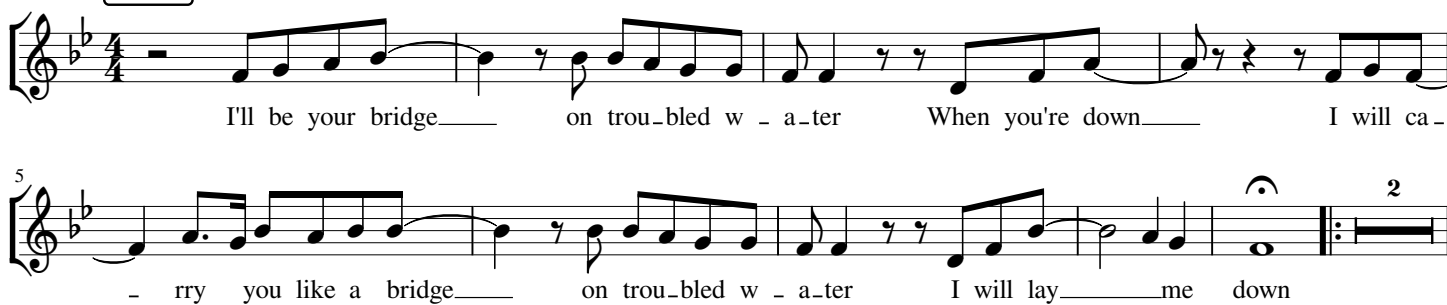
B down\_\_\_\_ lay me down\_\_\_\_

## Soprano

## Bridge Over Troubled Water

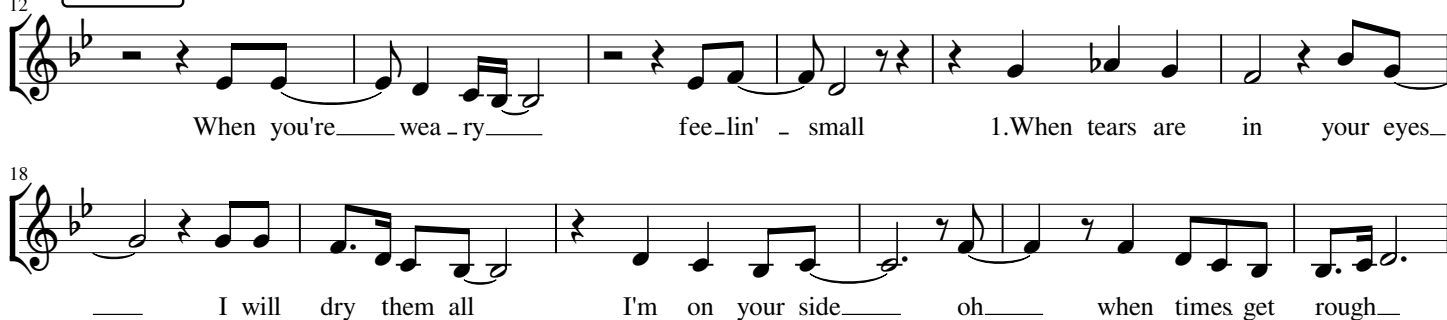
Transcribed for Choir On The Green  
in style of Fairfield County Choir

## Intro



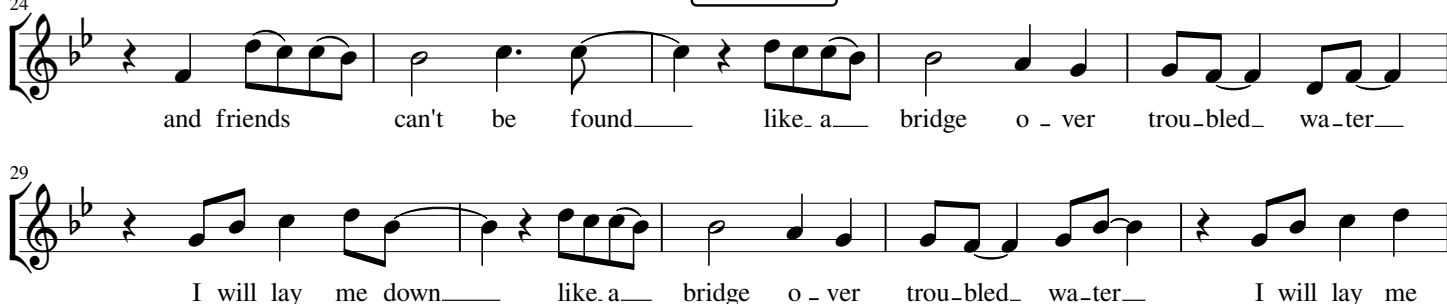
I'll be your bridge\_\_\_\_ on trou-bled w - a-ter When you're down\_\_\_\_ I will ca -  
- rry you like a bridge\_\_\_\_ on trou-bled w - a-ter I will lay\_\_\_\_me down

## Verse 1



When you're\_\_\_\_wea - ry\_\_\_\_ fee\_lin' - small 1.When tears are in your eyes\_  
\_\_\_\_ I will dry them all I'm on your side\_\_\_\_ oh\_\_\_\_ when times get rough\_\_\_\_

## Chorus 1



and friends can't be found\_\_\_\_ like a\_\_\_\_ bridge o - ver trou-bled wa-ter\_\_\_\_  
I will lay me down\_\_\_\_ like a\_\_\_\_ bridge o - ver trou-bled wa-ter\_\_\_\_ I will lay me

## Verse 2



down When you're\_\_\_\_down and out\_\_\_\_ On the\_\_\_\_street When ev - ning  
falls so hard\_\_\_\_ I will com\_fort. you\_\_\_\_ I'll take your part\_\_\_\_ oh\_\_\_\_ when dark\_ness

## Chorus 2



comes\_\_\_\_ and pain. is\_\_\_\_ all a - round like a\_\_\_\_ bridge o - ver trou-bled wa-ter\_\_\_\_



54

I will lay me down like a bridge o-ver trou-bled wa-ter I will lay me

**Intro 2**

59

down I'll be your bridge on trou-bled w-a-ter When you're down I will ca-

64

- rry you like a bridge on trou-bled w-a-ter I will lay me down

**Verse 3**

71

Sail on sil-ver girl Sail on by Your time has come to shine all your

78

dreams all your dreams are on their way See how they shine oh if you ev-er

**Chorus 3**

82

need a friend I'm sail-ing right be-hind like a bridge o-ver

87

trou-bled wa-ter I will ease your mind like a bridge o-ver trou-bled wa-ter

**Outro**

Claps in

92

I will ease your mind I'll be your bridge on trou-bled w-

96

a-ter When you're down I will ca- rry you like a bridge on trou-bled w-

100

a-ter I will lay I will lay me down lay me down

Rit.

Mezzo / Alto

# Bridge Over Troubled Water

Transcribed for Choir On The Green  
in style of Fairfield County Choir

## Intro

I'll be your bridge\_\_\_\_ on trou-bled w - a-ter When you're down\_\_\_\_ I will ca -  
- rry you like a bridge\_\_\_\_ on trou-bled w - a-ter I will lay\_\_\_\_ me down

## Verse 1

When you're\_\_\_\_wea-ry\_\_\_\_ fee-lin' - small When tears are in your eyes\_\_\_\_ I will  
dry them all I'm on your side\_\_\_\_ oh\_\_\_\_ when times get rough\_\_\_\_ and friends just

## Chorus 1

can't be found\_\_\_\_ like a bridge o - ver trou-bled wa-ter\_\_\_\_ I will lay me down\_\_\_\_

## Verse 2

\_\_\_\_ like a bridge o - ver trou-bled wa-ter\_\_\_\_ I will lay me down  
Ooo\_ooo\_\_\_\_ Ooo\_ooo\_\_\_\_ Ooo\_ooo\_\_\_\_ so hard Com - fort. you

## Chorus 2

When dark - ness comes\_\_\_\_ Aaah\_\_\_\_ like a bridge o - ver  
trou-bled wa-ter\_\_\_\_ I will lay me down\_\_\_\_ like a bridge o - ver trou-bled wa-ter\_\_\_\_

**Intro 2**

58



62



65

**Verse 3**

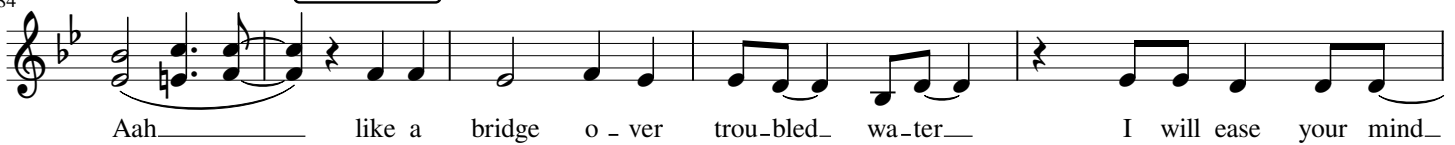
69



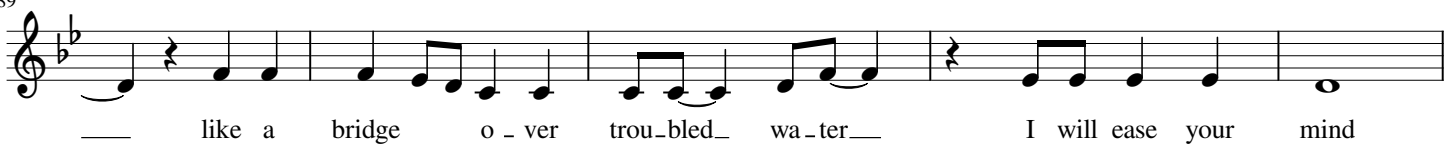
77

**Chorus 3**

84



89

**Outro**

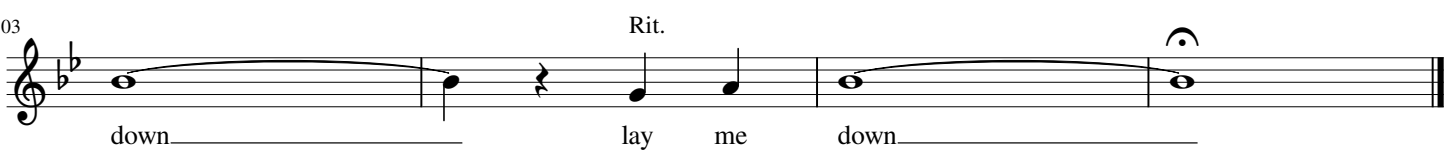
94



98



103



Men

# Bridge Over Troubled Water

Transcribed for Choir On The Green  
in style of Fairfield County Choir

## Intro



## Verse 1



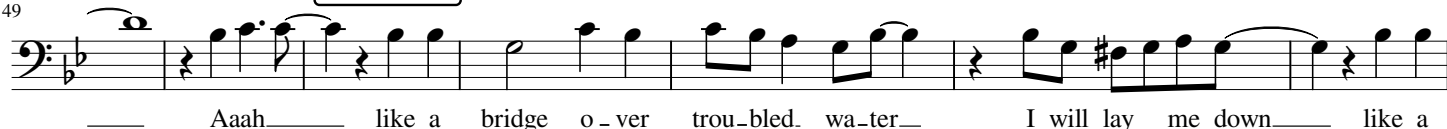
## Chorus 1



## Verse 2



## Chorus 2



## Intro 2



65 Verse 3

\_\_\_\_\_ on trou-bled w - a-ter I will lay\_\_\_\_\_me down

75

Your time has come to shine\_\_\_\_\_ all your dreams all your dreams are on their way

79

See how they shine\_\_\_\_\_

83 Chorus 3

Aah\_\_\_\_\_ like a bridge o - ver trou-bled\_ wa-ter\_\_\_\_\_ I will ease\_ your mind\_

89

\_\_\_\_\_ like a bridge o - ver trou-bled\_ wa-ter\_\_\_\_\_ I will ease your mind

94 Outro

Claps in

I'll be your bridge\_\_\_\_\_ on trou-bled w - a-ter When you're down I will ca \_

98

\_ rry you like a bridge\_\_\_\_\_ on trou-bled w - a-ter I will lay\_\_\_\_\_ I will lay\_\_\_\_\_ me

103

Rit.

down\_\_\_\_\_ lay me down\_\_\_\_\_